



DRIVING INNOVATION

PRODUCT PROFILE

2023

www.dhcindia.com



DRIVING THE FUTURE OF CAR EXPERIENCES SINCE 2008

DHC Autosolutions was founded with the goal of delivering precision, safety and aesthetics in all cars. With this goal, we started working on making the experience of your automobile the best in class in 2008.

And, we were successfully able to establish ourselves as a brand leader in Reverse Parking Sensors, Video Parking Cameras and Screens. Apart from these, we also manufacture and market various products, from Stereo Installation Kits to Wiper Blades.

we exceed excellence
in each product
we deliver

8
2008
SINCE



PASSION DRIVES US TO DELIVER THE BEST

At DHC, our aim has always been to offer the best solutions to elevate the automobile experience.

With this vision, we set out to build, innovate, and deliver solutions that don't just elevate the automobile experience, but multiply it everyday.

And that's how we launched our first product ever - the reverse parking sensors and cameras, back in 1996!

and we have
never stopped
since...

DRIVEN BY
PASSION

DRIVING INNOVATION RELENTLESSLY...

We firmly believe that innovation goes beyond the product, and truly has to be brought out in the experience of the product.

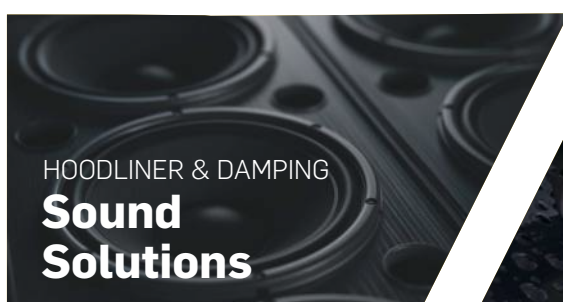
Even in the first product we ever launched, the reverse parking sensor and camera, we didn't just bring a product into the market, we brought a service. With a dedicated manufacturing vendor, we've been importing and promoting the concept of even installing the product over the counter for the complete experience.

So since our flagship product, we have brought innovation in even the smallest factor of the automobile experience and employed several marketing tools to promote them.

And this hard work, diligence and innovation was just what brought us the Mitsubishi contract for being vendors for OEM for Auto Mirror Fold systems.

This is what made us people's favourite and made us the brand we are.

PRODUCT
RANGE



01

LIGHTING SOLUTIONS

LED, FOG PROJECTOR, THAR HEADLIGHT,
DRIVING LIGHT, D SERIES, HID



F75

LED HEADLAMP

75W 6000K
150W PER PAIR 14,000LM PER PAIR

10X BRIGHTNESS
500 METER THROW

12 MONTHS WARRANTY + 12 MONTHS FREE EXTENDED WARRANTY



PREMIUM BUILD
QUALITY



INTELLIGENT
COOLING SYSTEM



50,000+ HRS
LIFE SPAN



NON-STOP
POWER



360° BEAM
ANGLE



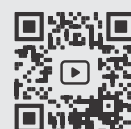
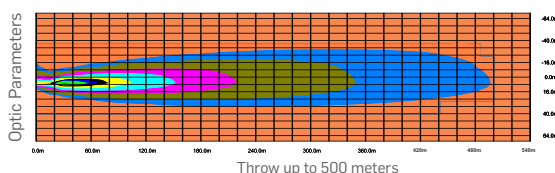
6.5MM
COPPER CHIP

SPECIFICATIONS

- Power : 150W per pair
- Lumen : 14,000LM per pair
- Color Temperature : 6000K
- Voltage : 9-16V, Beam Angle : 360°
- Warranty : 12 Months + 12 months free extended warranty
- Life span : Up to 50,000 Hrs
- LED Chip : Automobile grade high power chip
- Heat dissipation : Aviation Aluminum 6182.69
- High Speed Cooling fan with stable and low noise

MODELS AVAILABLE

H1, H4, H7, H8/H11/H16, H880,
H9005, H9006, 9012



SCAN QR FOR
REVIEW VIDEO

F75

LED HEADLAMP

75W 4300K
150W PER PAIR 14,000LM PER PAIR

10X BRIGHTNESS
500 METER THROW

12 MONTHS WARRANTY + 12 MONTHS FREE EXTENDED WARRANTY



PREMIUM BUILD
QUALITY



INTELLIGENT
COOLING SYSTEM



50,000+ HRS
LIFE SPAN



NON-STOP
POWER



360° BEAM
ANGLE



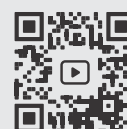
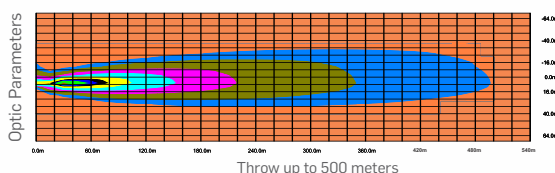
6.5MM
COPPER CHIP

SPECIFICATIONS

- Power : 150W per pair
- Lumen : 14,000LM per pair
- Color Temperature : 4300K
- Voltage : 9-16V, Beam Angle : 360°
- Warranty : 12 Months + 12 months free extended warranty
- Life span : Up to 50,000 Hrs
- LED Chip : Automobile grade high power chip
- Heat dissipation : Aviation Aluminum 6182.69
- High Speed Cooling fan with stable and low noise

MODELS AVAILABLE

H1, H4, H7, H8/H11/H16, H880,
H9005, H9006, 9012



SCAN QR FOR
REVIEW VIDEO

F55 LED HEADLAMP

55W 6000K
110W 10,000LM
PER PAIR PER PAIR

12 MONTHS + **12 MONTHS FREE EXTENDED WARRANTY**



**200X BETTER
HEAT CONDUCTION**



**QUICK
START**



**LONG LIFE
SPAN**



**1MM
COPPER**



**BEST
HEAT FLOW**



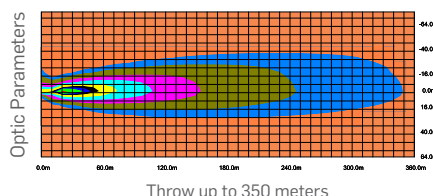
**CONTINUOUS
POWER**

SPECIFICATIONS

- Power : 110W per pair
- Lumen : 10,000LM per pair
- Color Temperature : 6000K
- Voltage : 9-16V, Beam Angle : 360°
- Warranty : 12 Months + 12 months free extended warranty
- Lifespan : Upto 30,000 Hrs
- LED Chip : Automobile grade high power chip
- Heat dissipation : aviation aluminum 6063
- Cooling fan with stable and low noise

MODELS AVAILABLE

H1, H4, H7, H8/H11/H16, H880,
H9005, H9006, 9012



ILLUMINATING YOUR WAY
BRILLIANTLY



SCAN QR FOR
REVIEW VIDEO

F55 LED HEADLAMP

55W 4300K
110W PER PAIR 10,000LM PER PAIR

12 MONTHS + **12 MONTHS FREE EXTENDED WARRANTY**



**200X BETTER
HEAT CONDUCTION**



**QUICK
START**



**LONG LIFE
SPAN**



**1MM
COPPER**



**BEST
HEAT FLOW**



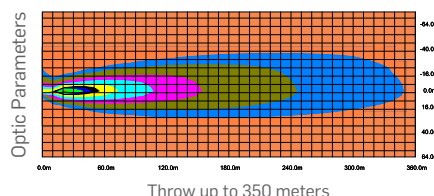
**CONTINUOUS
POWER**

SPECIFICATIONS

- Power : 110W per pair
- Lumen : 10,000LM per pair
- Color Temperature : 4300K
- Voltage : 9-16V, Beam Angle : 360°
- Warranty : 12 Months + 12 months free extended warranty
- Lifespan : Upto 30,000 Hrs
- LED Chip : Automobile grade high power chip
- Heat dissipation : aviation aluminum 6063
- Cooling fan with stable and low noise

MODELS AVAILABLE

H1, H4, H7, H8/H11/H16, H880,
H9005, H9006, 9012



ILLUMINATING YOUR WAY
BRILLIANTLY



SCAN QR FOR
REVIEW VIDEO

F35

LED HEADLAMP

36W 6000K
72W 14,000LM
PER PAIR PER PAIR



QUICK
START



LONG LIFE
SPAN



FAN FOR
HEAT



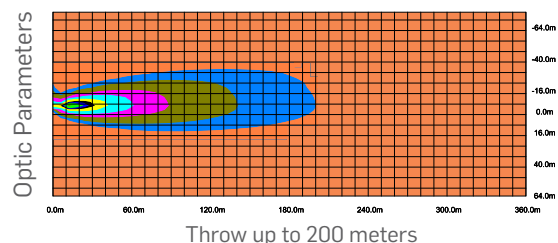
HIGH POWER
LED CHIP

MODELS AVAILABLE

H1, H3, H4, H7, H8, H11, H16, H19,
H27, H880, H9005, H9006

SPECIFICATIONS

- Power : 72W per pair
- Lumen : 7000LM per pair
- Color Temperature : 6000K
- Voltage : 9-16V
- Beam Angle : 360°
- Warranty : 12 Months warranty
- Lifespan : upto 20,000 Hrs
- LED Chip : Automobile grade high power chip
- Heat dissipation : aviation aluminum 6063
- Cooling fan with stable and low noise



SCAN QR FOR
REVIEW VIDEO

P055

HID PROJECTOR FOG LAMP

55W	5000K
110W PER PAIR	10,000LM PER PAIR

5X BRIGHTNESS
GERMAN MADE COMPONENTS



LIFESPAN
MORE THAN
30000 HOURS



IP67 WATERPROOF
PROTECTION
CERTIFIED



LIGHT-BEAM
LENGTH
INCREASED TWICE



50% MORE BRIGHT
THAN OTHER
PROJECTORS

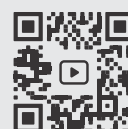


PERFORMANCE
MOTOR WITH 2
MILLION RUNS

80% INCREASED BRIGHTNESS | **60% INCREASED IRRADIATION**

SPECIFICATIONS

- Rated Voltage : 13.5V
- Output Power : 40W±2W, Output Voltage: 85±17V
- Input Current : 3.6A, Input Voltage: 9-16V, Max Input Current : ≤4.5A
- Instant start voltage : ≥23KV
- Built-in CANBUS function, specially designed for cars which with CANBUS system
- Adopts DSP intelligent full-digital control technology
- Advanced EMI circuit can solve interference problem
- With static testing circuit, avoid testing error when re-starting engine



SCAN QR FOR
REVIEW VIDEO

PL55

DIRECT LED FOG LAMP

**BIFOCAL
LENS**

**55W
PER PAIR**



**LIFESPAN
MORE THAN
30000 HOURS**



**IP67 WATERPROOF
PROTECTION
CERTIFIED**



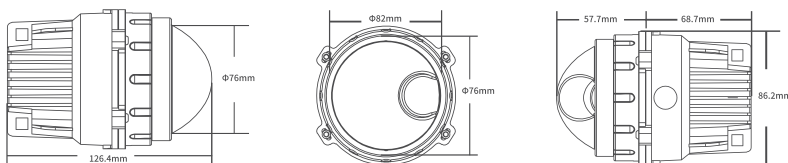
**LIGHT-BEAM
LENGTH
INCREASED TWICE**



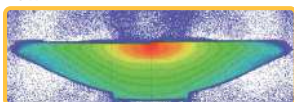
**50% MORE BRIGHT
THAN OTHER
PROJECTORS**

SPECIFICATIONS

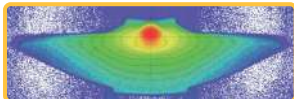
- Built-in intelligent driver
- High brightness direct fill light
- Built-in TIR prism
- IP67 waterproof
- Car -grade light-source



LOW BEAM



HIGH BEAM



AERIAL VIEW



SCAN QR FOR
REVIEW VIDEO

P-20

BI LED PROJECTOR FOG LAMP

**BIFOCAL
LENS**

**60W
PER PAIR**



**INTELLIGENT
SPEED**



**CPU
TEMPERATURE
CONTROL**



**ELECTROMAGNETIC
COMPATIBILITY**

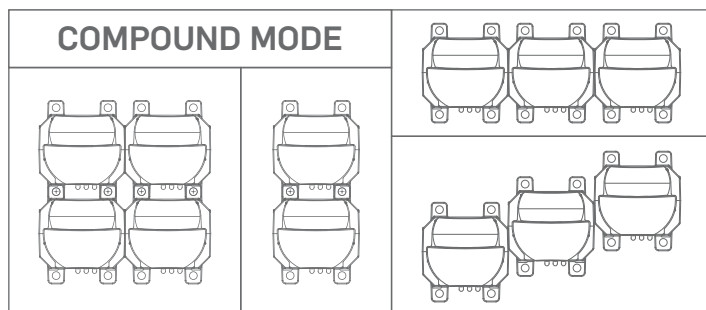


**9-60V
WIDE
VOLTAGE**

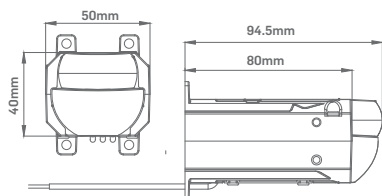
SPECIFICATIONS

- **SIMPLE STRUCTURE & HIGH RELIABILITY**
- **MODERATE SIZE & HIGH MATCHING**

- LED Chips : CSP chips
- Input Voltage : DC9-60V
- Rated Power : 30W(low beam); 40W(high beam)
- Lumination : low beam>400lux ± 10% @10m
- High Beam : >370lux ± 10% @10m
- Color Temp : 6000K
- Main Body : Aluminum
- Life-Span : >30000hrs
- Cooling Style : Fan Heatsink Build-in



PROJECTOR LENS SIZE



LOW BEAM



HIGH BEAM



**SCAN QR FOR
REVIEW VIDEO**

Ao36 BLACKHAWK LED HEADLIGHT



75W 6500K
150W 10000LM
PER PAIR



EYE COMFORT
SHIELD



PLUG AND
PLAY

300%
OF ORIGINAL
BRIGHTNESS

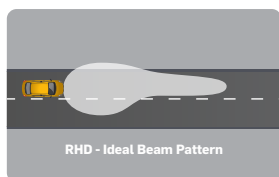


**RHD SPECIFIC
BEAM PATTERN
MADE FOR INDIA**

SPECIFICATIONS

- Available in DC9V-DO 36V configuration
- Comes with a high-low beam configuration with two options of chrome or smoked veil
- Stepless Thermal Management System
- Built-in Hand-Coated Raw Polycarbonate Cover stands up to harsh environmental conditions
- Solid binding LED eliminates the need of replacing the light source
- Die casting Aluminum housing for best heat release

ADVANTAGES OF RHD BEAM PATTERN



- India is a right-hand drive country, so we need headlights designed specifically for RHD conditions
- As per the RHD conditions, the throw from the right headlight is comparatively less, so it doesn't hurt drivers from the opposite side
- It gives you a perfect beam pattern and also saves other drivers from glare & temporary blindness
- The throw is up to 300 meters, which gives you high visibility & focus

LIGHTING MODES



HIGH BEAM



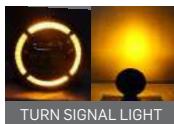
LOW BEAM



DAYTIME RUNNING



PARKING LIGHT



TURN SIGNAL LIGHT



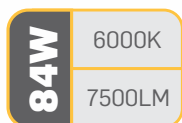
THE MOST POWERFUL THAR
LED HEADLIGHT
ENHANCES THE LOOK



SCAN QR FOR
REVIEW VIDEO

DRIVING LED BAR

21 INCH



**IP67 WATER
RESISTANT**



**ALL METAL
BUILT**



**1.5" SUPER
SLIM DESIGN**



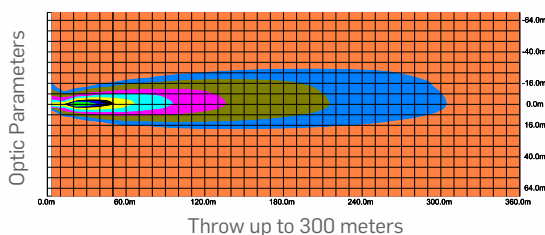
**CURVED
DESIGN**



**12 MINI LED
INSIDE**

SPECIFICATIONS

- Higher light efficiency by side emitting
- No Electromagnetic interference to other electronic devices
- 6000K, Excellent pure white light output
- Stainless steel bolts and bracket
- 2H+ Hardness PC cover - IP67 - Waterproof
- Less than 5% lumens depreciation in 30,000 hours Aerospace
- Aluminium housing aerodynamics is used to reduce the wind noise
- High quality silicone wire, high temperature resistance, aging resistance



SCAN QR FOR
REVIEW VIDEO

D SERIES LED HEADLAMP

45W 6000K
90W 6000LM
PER PAIR

5X BRIGHTNESS
SUPER HD LED BULBS



INTELLIGENT
COOLING



INSTANT
START



PLUG AND
PLAY



PERFECT
LIGHTING



SAFE &
ERROR FREE

SPECIFICATIONS

Input Power	45W per lamp
Input Voltage	DC9-16V
Luminosity	8000lm/SET
Life-Span	upto 30000hrs
Main Body	6030 Aluminum
Cooling Style	Fan Heatsink Build-in Canbus inside
Beam Angle	360 Degree
Voltage	9 -16v

MODELS AVAILABLE

D1s, D2s, D3s, D4s, D5s, D8s



SCAN QR FOR
REVIEW VIDEO

HID

QUICK START BALLAST

50W



2X FAST
BRIGHTNESS



SELF ERROR
CORRECTIONS



LONG LIFE
SPAN



ENERGY
EFFICIENT



INSTANT
ILLUMINATION



FAR RANGE
BEAM

SPECIFICATIONS

- High Brightness
- Long Life Span
- Self Error Corrections
- Energy Efficient



2X FAST BRIGHTNESS

HID XENON BULBS

50W
4300K
5000K

2X MORE BRIGHTNESS
WITH FAST BRIGHT XENON BULBS



2X FAST BRIGHTNESS



INSTANT ILLUMINATION



LONG LIFE SPAN

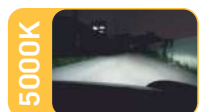
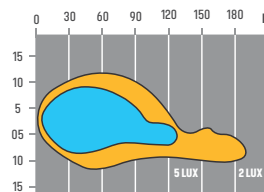
MODELS AVAILABLE

4300K & 5000K :

**H1, H3, H4-1, H4-2 H4-3, H4-4,
H7, H11, 9004, 9005, 9005, 9007**

SPECIFICATIONS

- **HIGH BRIGHTNESS** - 2 times more light emission compared to regular halogen light
- **FAR RANGE** - Twice the length of light beam range for more clarity of vision offers secured night drives
- **LONG LIFE SPAN** – 5000 hours of life span which is 8 times more compared to regular halogen light
- **ENERGY EFFICIENT** - 35W HID light only need half power compared to halogen light. Saves half of the energy



**SCAN QR FOR
REVIEW VIDEO**

T10

INTERIOR EXTERIOR LED

12W

6500K

SUPER BRIGHT LED



**SUPER BRIGHT
LED LIGHT**



**50000+ HRS
LIFE SPAN**



**ENERGY
EFFICIENT**



**FLASHING
LIGHTS**



T11

LED ROOF LAMPS

12W

6500K

SUPER BRIGHT LED



**SUPER BRIGHT
LED LIGHT**



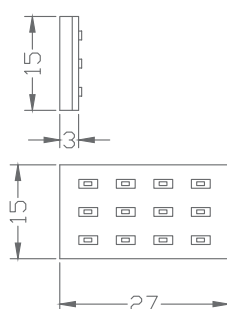
**50000+ HRS
LIFE SPAN**



**ENERGY
EFFICIENT**



**360° DEGREE
ILLUMINATION**



02

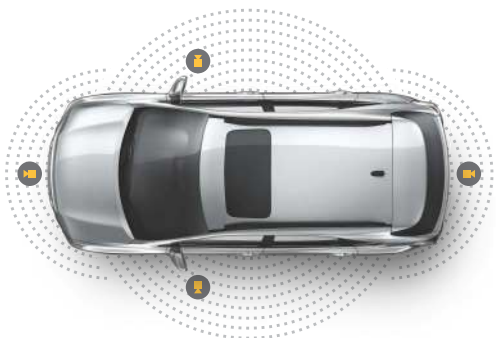
PARKING SOLUTIONS

360° CAMERA | REVERSE CAMERA
RENTENTION



360° CAMERA

CAR SPECIFIC



WILL ASSIST YOU IN



INTELLIGENT
CALIBRATION



360° DEGREE
SURROUND



LOW
SPEED



VERTICAL
PARKING



NIGHT
VISION



QUICK
RESPONSE



SIDE
PARKING



REVERSING



3D
VIEW



NARROW ROAD
ENTRY & EXIT

SPECIFICATIONS

Parameter	Typical Value
Sensor Type For Camera	2239(1080P), 1080P@25FPS
Sensitive Size	1/3"
Pixel	1920(H)x1080(V)
Balance	Automatic
Automatic Gain Control AGC	Automatic
Blacklight Compensation	Yes
Noise Reduction	2D DNR, 3D DNR
Signal To Noise Ratio	>52dB(AGC OFF)
Video Output	1.0Vp-p/75 Ω
Gamma Correction	0.45
Working Voltage	DC3.3-5V
Working Current	120mA
Power	0.4W(U=3.3V)
Working Temperature	-300C~+850C
Visual Angle	Vertical 130°, Horizontal 230°
Water Proof	IP68

FRONT VIEW



BACK VIEW



SIDE VIEW



3D VIEW



AVAILABLE FOR ALL MODELS OF

HYUNDAI, KIA, VOLKSWAGEN, SKODA AND
JEEP (2021 ONWARDS)



SCAN QR FOR
REVIEW VIDEO

360° CAMERA

ANDROID SPECIFIC



WILL ASSIST YOU IN



INTELLIGENT
CALIBRATION



360° DEGREE
SURROUND



NIGHT
VISION



QUICK
RESPONSE



3D
VIEW



LOW
SPEED



VERTICAL
PARKING



SIDE
PARKING



REVERSING



NARROW ROAD
ENTRY & EXIT

SPECIFICATIONS

Parameter	Typical Value
Sensor Type For Camera	2053 (1080P), 1080P@25FPS
Sensitive Size	1/4"
Pixel	1920(H)x1080(V)
Balance	Automatic
Automatic Gain Control AGC	Automatic
Blacklight Compensation	Yes
Noise Reduction	2D DNR
Signal to Noise Ratio	>52dB(AGC OFF)
Video Format	1080P@25FPS;
Video output	1.0Vp-p/75ohm
Gamma Correction	0.45
Working Voltage	DC3.3V
Working Current	90mA
Power	0.3W(U=3.3V)
Working Temperature	-30°C~+70°C
Overall Dimension	Benchmarking 16mm Octagon
Water Proof	IP68

FRONT VIEW



BACK VIEW



SIDE VIEW



3D VIEW



MODELS AVAILABLE

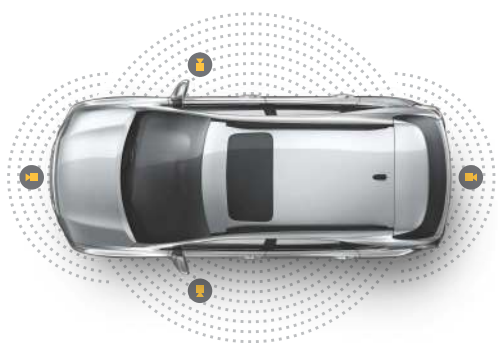
1080p LENS, SONY LENS



SCAN QR FOR
REVIEW VIDEO

360° CAMERA

UNIVERSAL



SPECIFICATIONS

Parameter	Typical Value
Sensor Type For Camera	2053 (1080P), 1080P@25FPS
Sensitive Size	1/4"
Pixel	1920(H)x1080(V)
Balance	Automatic
Automatic Gain Control AGC	Automatic
Blacklight Compensation	Yes
Noise Reduction	2D DNR
Signal to Noise Ratio	>52dB(AGC OFF)
Video Format	1080P@25FPS;
Video output	1.0Vp-p/75ohm
Gamma Correction	0.45
Working Voltage	DC3.3V
Working Current	90mA
Power	0.3W(U=3.3V)
Working Temperature	-30°C~+70°C
Overall Dimension	Benchmarking 16mm Octagon
Water Proof	IP68



1080P AHD
RECORDING



360° DEGREE
SURROUND



3D
VIEW



NIGHT
VISION



QUICK
RESPONSE



INTELLIGENT
CALIBRATION

FRONT VIEW



BACK VIEW



SIDE VIEW



3D VIEW



SCAN QR FOR
REVIEW VIDEO



DH-919

AHD+CVBS

BUMPER REVERSE CAMERA

DH-719

AHD+CVBS

NUMBER PLATE REVERSE CAMERA



NIGHT
VISION



PLUG AND
PLAY



RESOLUTION
1280 X 720



170° WIDE
ANGLE



SPECIFICATIONS

Optical Format	1/2.9inch
Pixel Size	2.8um x2.8um
Active Pixel Array	1920 x 1080
Shutter Type	Electronic Rolling Shutter
Adc Resolution	10 bit ADC
Max Frame Rate	30fps@Full Size
Power Supply	AVDD28: 2.8V
Power Source	DVDD: 1.2V
Power Consumption	IOVDD: 1.8V
Operating Temperature	-20-80°C
Stable Image Temperature	0-60°C
Optimal Lens Chief Ray Angle(CRA)	12°(Linear)
Package Type	CSP
Input Clock Frequency	6-27MHz

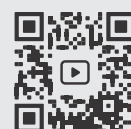


SUPPORTS AHD
& NON AHD STEREOS

THIRD EYE ADDED

In the world of heavy traffic conditions and tight parking spaces, our reverse camera is of immense help in parking your car safely.

We provide latest and highly advanced reverse cameras with 'PLUG & PLAY' INTEGRATION, lets you keep the original wiring intact. Our reverse camera easily integrates with all modern cars' OEM stereo screen.



SCAN QR FOR
REVIEW VIDEO

PARKING SOLUTIONS



DH-999 BUMPER REVERSE CAMERA



DH-799 NUMBER PLATE REVERSE CAMERA



150° WIDE
ANGLE



WATERPROOF
IP 68



RESOLUTION
728 X 488



COMPACT
DESIGN

THIRD EYE ADDED

In the world of heavy traffic conditions and tight parking spaces, our reverse camera is of immense help in parking your car safely.

We provide latest and highly advanced reverse cameras with 'PLUG & PLAY' INTEGRATION, lets you keep the original wiring intact. Our reverse camera easily integrates with all modern cars' OEM stereo screen.

SPECIFICATIONS

Waterproof	IP 68
Camera Cable Length	1mm
Power Cable Length	1.2mm
Video Cable Length	6m
Parking Lines	Yes
Operating Temperature	20_+750 C
Power Source	DC 12 V



SCAN QR FOR
REVIEW VIDEO

DH-799M

NUMBER PLATE REVERSE CAMERA



150° WIDE
ANGLE



WATERPROOF
IP 68



MOVING
LINE



NIGHT
VISION



PLUG AND
PLAY



RESOLUTION
728 X 488

SPECIFICATIONS

Waterproof	IP 68
Camera Cable Length	1mm
Power Cable Length	1.2mm
Video Cable Length	6m
Parking Lines	Yes
Operating Temperature	20_+750 C
Power Source	DC 12 V

THIRD EYE ADDED

In the world of heavy traffic conditions and tight parking spaces, our reverse camera is of immense help in parking your car safely.

We provide latest and highly advanced reverse cameras with 'PLUG & PLAY' INTEGRATION, lets you keep the original wiring intact. Our reverse camera easily integrates with all modern cars' OEM stereo screen.



12
MONTHS
WARRANTY



SCAN QR FOR
REVIEW VIDEO

CAMERA

CAR RETENTION



COLOR
DISPLAY



WATER
PROOF



WIDE VIEW
ANGLE



NIGHT
VISION



PLUG AND
PLAY



HIGH
RESOLUTION

- CAR SPECIFIC REVERSE CAMERA
- OEM REVERSE CAMERA RETENTION

MODELS AVAILABLE

MARUTI SUZUKI : S CROSS ZETA, BALENO, ERITGA 2022, WAGON R

HYUNDAI : CRETA S, SX, SANTRO 2019

VOLKSWAGEN : POLO, VENTO, JETTA 2016

SKODA : RAPID 2016

TOYOTA : INNOVA LIMITED EDITION, ALTIS G, CRYSTA, GLANZA

HONDA : BRIO, AMAZE (FOR ALPINE PLAYER)

SPECIFICATIONS

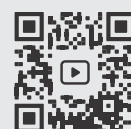
- CMOS Compact 1/4 Inch
- Resolution : 307 X 200 pixels
- 170° Viewing Angle
- Mirror Functions
- Waterproof : Ip67
- PAL or NTSC
- Compact Bumper Mount
- Dimensions : 15mm

KEY FEATURES

- Vehicle Rear View Camera
- Color CMD Camera System
- View Angle : Horizontal 170° Vertical 120°
- Wide View Angle for Additional Safety
- Compact Size and Easy Installations

THIRD EYE ADDED

In the world of heavy traffic conditions and tight parking spaces, our reverse camera is of immense help in parking your car safely. We provide latest and highly advanced reverse cameras with 'PLUG & PLAY' INTEGRATION, lets you keep the original wiring intact. Our reverse camera easily integrates with all modern cars' OEM stereo screen.



SCAN QR FOR
REVIEW VIDEO

03

INFOTAINMENT SOLUTIONS

ANDROID PLAYERS - REAGAL, INOX



REGAL ANDROID PLAYER

 **Android 10**

4 GB + 32 GB



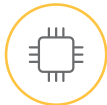
**BRIGHTEST
QLED DISPLAY
60Hz**



**SPLIT
SCREEN**



**DSP 48
BAND EQ**



**TS10
PROCESSOR
WITH 8 CORE**



**SUPERFAST
1.8GHZ
PROCESSOR**



**BUILT IN
GOOGLE
PLAY STORE**

SPECIFICATIONS

- Main Processor: TS 10, 8-Core 2x A75 + 6x A55 Processor, The Main Frequency Can Reach up to 1.8GHz
- Screen Size: Support QLED Resolution Display Driver (30PIN PIMI Interface: 720x1280)
- RAM & ROM: 4 GB RAM LPDDR4X & eMMC (MLC) 32GB ROM
- Radio: TDA8035GPS NAVIGATOR = Can Support GPS + Google maps
- Point Screen: LVDS/MIPI Audio
- Output: L, R, Subwoofer
- USB: USB1, USB2, USB3, Support USB Interface VR Device
- Bluetooth: Built-in Bluetooth 5.0 Version, Supports Bluetooth Phone Book, A2DP, Bluetooth OBD, Mouse, Handle, Keyboard, & Other External Bluetooth Auxiliary Devices.
- DSP: Built-in ROHM DSP, Digital Audio Processor, Improves Sound Quality
- WIFI: Built-in WIFI •Power Output: 50x4



ANDROID AUTO - WIRELESS



APPLE CAR PLAY - WIRELESS



YOUTUBE



360° CAMERA SUPPORT



CUSTOM MUSIC MODES

★★★★★
EASY TO READ UI
MOST PREMIUM LOOK
SMOOTHTEST ANDROID
USER INTERFACE IN INDIA

MODELS AVAILABLE

9" - DH90432 | 10" - DH10432

12
MONTHS
WARRANTY



SCAN QR FOR
REVIEW VIDEO

INOX ANDROID PLAYER

 **Android 10**

2 GB + 32 GB



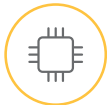
**IPS
DISPLAY
60Hz**



**SPLIT
SCREEN**



**360° CAMERA
SUPPORT**



**IT IS T5 AND
1.5GHZ**



**GOOGLE
PLAY STORE**



YOUTUBE



**60HZ
REFRESH RATE**



**ANDROID AUTO-
WIRELESS**



**APPLE CAR PLAY -
WIRELESS**



GOOGLE MAPS



360° CAMERA SUPPORT

SPECIFICATIONS

- Main processor: T5 4 core Cortex-A7, 1.5GHz, 2GB DDR3, 32GB EMMC, GPU: Mali 400Mp2 frequency 400MHz
- Operation: Capacitive screen multi-touch
- Screen size: 7~14 inch IPS display interface, Maximum support 1280 * 800 @ 60Hz resolution display driver (LVDS output)
- Resolution: 800*480 / 1024*600
- FM Radio: excellent radio effect / Radio SI4754/FM high-performance digital radio
- Navigation: Igo/ google map/Waze/Sygic. Support map built-in/external, supports navigation split-screen function
- 1 video output, 3 video inputs (CAMERA, AUX, FCAM), Supports 4.1 channel line output
- USB/SD: Supports up to 2T disk, 2 channel USB, 1 channel front USB (optional) / 1 channel front SD (Need to customize)
- Bluetooth: Support phone book, call, call-free, hands-free, connected, missed call records, support for Bluetooth music playback, support for external microphones
- Output Power: 4x45W high power output YD 7388
- Music format: MP3, WMA, AAC, APE, and other audio formats automatically recognize ID3 and album display
- Support rear view camera-fast reversing display (Add support for AHD720P HD camera configuration)

MODELS AVAILABLE

9" - DH9932 | 10" - DH1132

**12
MONTHS
WARRANTY**



**SCAN QR FOR
REVIEW VIDEO**

04

SOUND SOLUTIONS

SOUND DAMPING, HOODLINER



SOUND DAMPING SHEET

- The Damping Sheet is designed to kill road, engine and exhaust noise, it also reduces heat very well.



- Perfect for full vehicle protection
- Overall improved sound quality
- Similar Performance to Expert Series with 25% Less weight
- Increased amplifier output
- Easy cut and apply installation
- Self-adhesive
- No surface preparation required for a solid installation

- High temperature resistance up to 400° F
- Super-adhesive and comfortability provides maximum surface contact
- Lightweight Construction
- Stealth Silver Aluminum

HOODLINER



HIGH THERMAL
INSULATION

SUPERIOR
ADHESIVE



EASY PEEL
INSTALLATION



SUPERIOR
ADHESIVE



HIGH THERMAL
INSULATION



VIBRATION
DAMPING



05

RAIN SOLUTIONS

WIPER BLADES - ECO, MAX, PRO, REAR



ECO WIPER BLADE

- HOOK TYPE EASY INSTALLATION
- LONG-LIFE & HIGH PERFORMANCE
- PRECISION-CUT WIPING EDGE



SUPER SOFT
MATERIAL



SINGLE STROKE
CLEAN WIPE



MAXIMUM
WIPED AREA

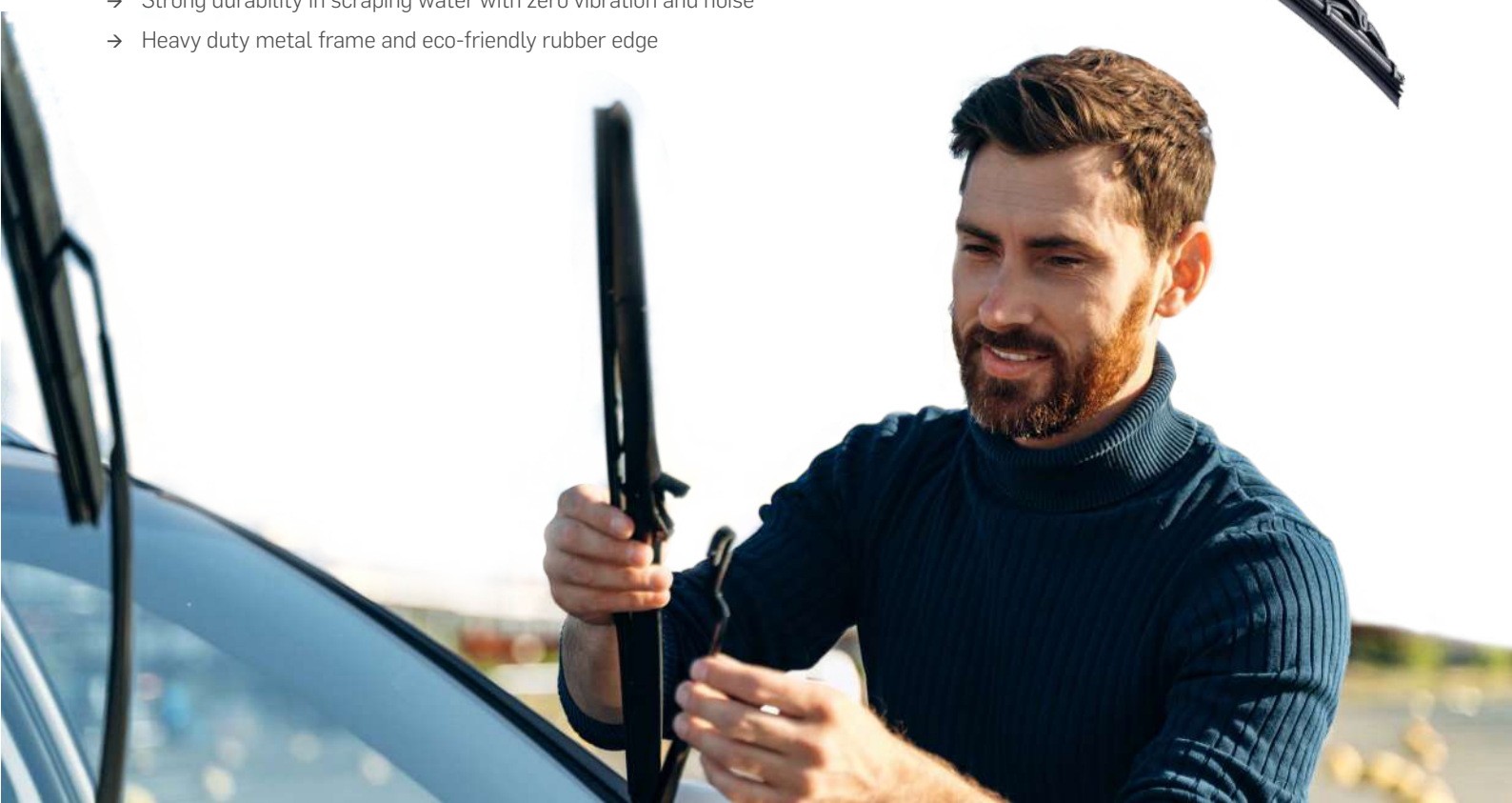


MAXIMUM
CLEAR VISION



MAX WIPER BLADE

- Fits most vehicles including American, European & Japanese
- Aerodynamic design, high performance at top speed
- Easy to install for most type of wiper arms
- Strong durability in scraping water with zero vibration and noise
- Heavy duty metal frame and eco-friendly rubber edge



PRO WIPER BLADE

- 99% UNIVERSAL FIT FOR WORLDWIDE VEHICLES
- FULL AERO DESIGN WITH 60% HIGHER WIPING PERFORMANCE
- COMPARED WITH TRADITIONAL WIPER BLADE

MODELS AVAILABLE

12", 14", 15", 16", 17" 18", 19", 20", 21", 22", 24", 26"



REAR WIPER BLADE



SUPER SOFT
MATERIAL



SINGLE STROKE
CLEAN WIPE



MAXIMUM
WIPED AREA



MAXIMUM
CLEAR VISION

MODELS AVAILABLE

10", 11", 12"

WIPER ARM Ø 4.0 X 11MM



WIPER ARM Ø 7.0 X 12MM



WIPER ARM Ø 7.0 X 12MM



WIPER ARM Ø 7.0 X 11MM



06

SECURITY SOLUTIONS

CAR DASHCAM



C01 **4K** ULTRA HD RESOLUTION CAR DASHCAM



DUAL CHANNEL TO
CONNECT REAR/
CABIN CAMERA



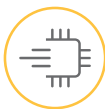
WIDE
140 DEGREE
VIEW



128GB
MEMORY CARD
SUPPORT



ADJUSTABLE
FRONT
LENS



SUPER FAST
NT 96565
PROCESSOR



ACCESS ALL
VIDEOS &
DOWNLOAD THEM
VIA AN APP



NIGHT
VISION

SPECIFICATIONS

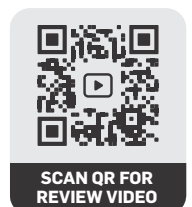
- CPU : Nt96565
- Screen size : 3 inch
- Screen type : IPS
- Screen resolution : 640* 480
- Focal length : f 2.9mm
- Aperture : F/ NO = 1.8
- Video recording resolution : 4K 2880* 1440 24FPS
- Front video recording when connected to cabin/rear camera : 2K 2560*1440 30FPS
- Power supply : 12 - 24V
- Maximum SD card support : 128gb
- WDR : YES



C01R REAR/CABIN DASHCAM

For additional surveillance of
cabin or rear view of your car

Install DHC C01R camera for in cabin OR
rear view surveillance



C01R

REAR/CABIN DASHCAM

For additional surveillance of cabin or rear view of your car



RESOLUTION
1920 X 1080



WIDE ANGLE
VIEW
130° DEGREE



SEAMLESS
CONNECT TO
FRONT UNIT



SPECIFICATIONS

- Sensor : Gc2053
- Resolution : 1920H*1080
- View angle : 130°
- F/NO : 2.0
- Focal Length : f3.0mm
- Lens Type and Layers : 2G3P+IR
- Waterproof : NO
- Weight : 37.5g
- Size : 56.5*46.4*24.8mm,
- Power Supply : DC 5V

Dual channel connection for 2X safety and surveillance with DHC **C01** and **C01R**



SCAN QR FOR
REVIEW VIDEO

DRIVING INNOVATION



DHC AUTOSOLUTION LLP

113, Dheeraj Heritage, Santacruz(west)
Mumbai-54, Maharashtra, India.

+91 22 26615499 info@dhcindia.com

dhcautosolutions



dhcindia.com



FOR INSTALLATION VIDEOS AND PRODUCT UPDATES, SUBSCRIBE TO
DHC AUTOSOLUTIONS